

- ♦ Pt. Reyes clasts, Pt. Reyes Conglomerate
 △ Pt. Reyes basement, Porphyritic granodiorite of Pt. Reyes
 ○ Pt. Lobos basement, Porphyritic Granodiorite of Monterey
 Porphyritic Granodiorite of Pt. Reyes, range, data of Ross (1984)
 Porphyritic Granodiorite of Monterey, range, data of Ross (1984)

Diagram of the QKP mineralogy of the basement granodiorites of Point Reyes and Point Lobos, and certain granitic clasts within the Point Reyes Conglomerate. Data are from three samples of Point Lobos basement, three samples of Pt. Reyes basement, and two granitic clasts of the Point Reyes Conglomerate (from Burnham, K., 2005, Point Lobos to Point Reyes: Evidence of ~180 km offset on the San Gregorio and northern San Andreas Faults, in Stevens, C., and Cooper, J., eds., Cenozoic Deformation in the Central Coast Ranges, California: Pacific Section SEPM fieldtrip guidebook and volume prepared for the joint meeting of the Cordilleran Section GSA and Pacific Section AAPG, San Jose, book 97, p. 1-29.

Pacific Sedimentologist

FALL FIELD TRIP ISSUE



PACIFIC
SECTION

Newsletter of the Pacific Section, SEPM
 (Society for Sedimentary Geology)
<http://www.sci.sdsu.edu/pacsepm>

Mario V. Caputo, Editor
 Department of Earth Sciences & Astronomy
 Mt. San Antonio College
 1100 North Grand Avenue
 Walnut, CA 91789

volume 79, issue 1

August, 2007

PS-SEPM Fall Field Trip scheduled for Saturday & Sunday October 6 & 7, 2007

Saturday, October 6, 2007:

Geology and Stratigraphy of Stanford Linear Accelerator Center (SLAC), Menlo Park, CA

Leaders: Kenn Ehman, Chevron Energy Technology Company, Houston, TX

Susan Witebsky, Stanford Linear Accelerator Center, Menlo Park, CA

Sunday, October 7, 2007:

Paleogene Conglomeratic Submarine Canyon Fill, Point Lobos State Reserve

Leaders: Ed Clifton, U. S. Geological Survey, Emeritus and Docent Pt. Lobos State Reserve

Larry Rychner, Chevron Production retired, and Docent Pt. Lobos State Reserve

REGISTRATION DEADLINE is September 21, 2007

Field trip information on pp. 2-5 of this newsletter;
 Registration & Membership forms are printed back-to-back on pp. 11-12.

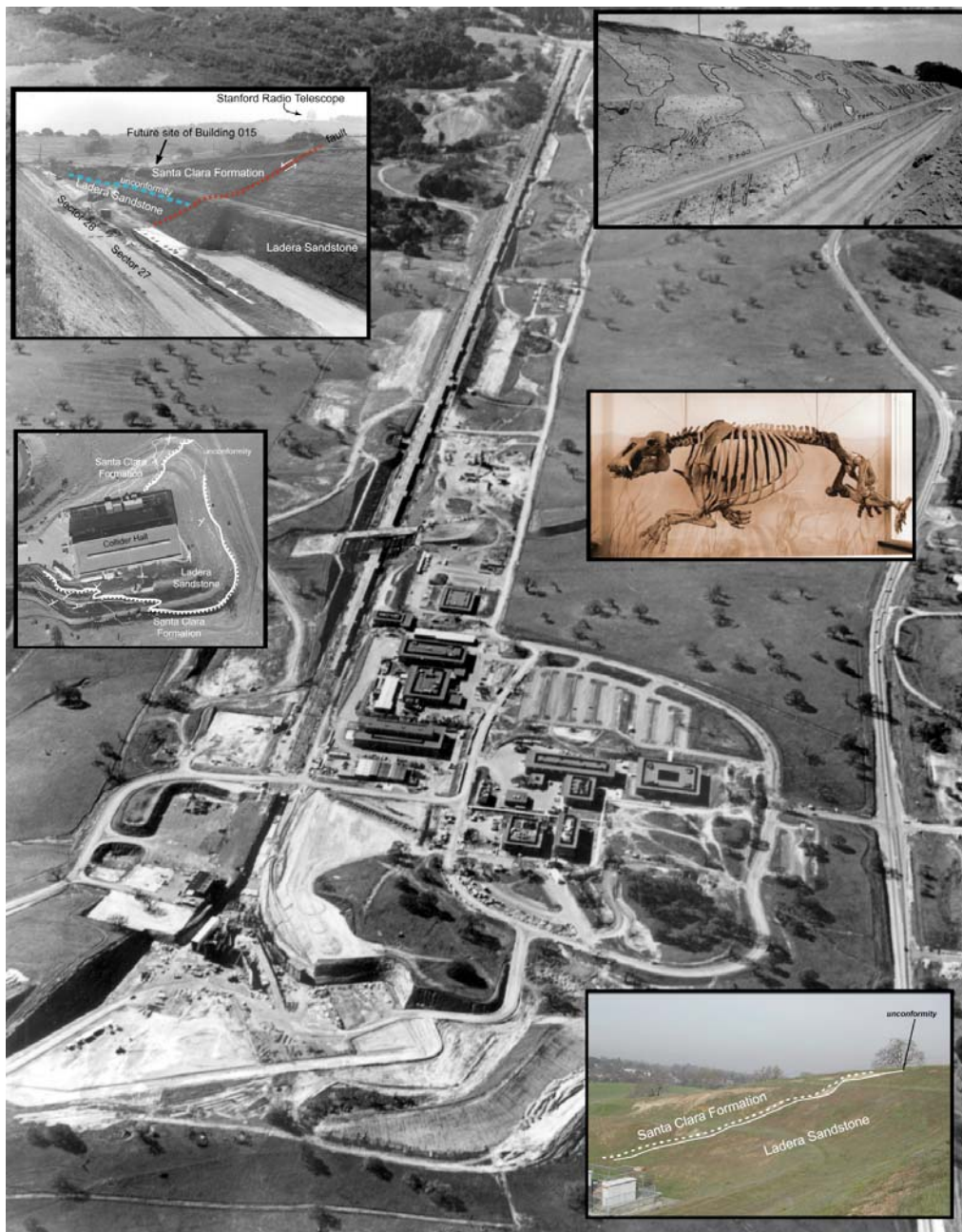
Also posted on the Society website: <http://www.sci.sdsu.edu/pacsepm>.

OVERVIEWS OF THE FIELD TRIPS

DAY 1: Saturday, October 6, 2007

Geology & Stratigraphy of Stanford Linear Accelerator Center (SLAC), Menlo Park, CA

Stanford Linear Accelerator Center (SLAC) is a 426-acre national research facility located in San Mateo County between the alluvial plain to the east and the Santa Cruz Mountains to the west. Established for studying the properties of matter, it is owned and operated by Stanford University for the U. S. Department of Energy. In the 1960s, a two-mile trench was excavated for the SLAC construction site. Having been logged in detail, the excavation now provides unparalleled insights into the stratigraphy and structure of this region. This geologic field trip will focus on architecture and depositional environments of lithostratigraphic units exposed along the trench and nearby areas, including the marine Whiskey Hill Formation (Eocene), the marine Ladera Sandstone (Miocene), the marine Monterey Formation (Miocene), and the nonmarine Santa Clara Formation (Plio-Pleistocene). Participants will be able to examine these stratigraphic units within a structural framework, and address issues regarding engineering and groundwater geology at SLAC.



Complete skeleton of the rare marine desmostylian mammal, *Paleoparadoxia*

DAY 2: Sunday, October 7, 2007

Paleogene Conglomeratic Submarine Canyon Fill, Point Lobos State Reserve

The Paleogene Carmelo Formation at Point Lobos State Reserve, at the south end of Carmel Bay, provides a superbly exposed example of an ancient submarine canyon filled with conglomerate in one of the most scenic settings on the central California coast. This walking trip will focus on facies hierarchy, internal organization within the canyon fill, and possible connections to sequence stratigraphy. Participants will be able to examine unique ancient examples of sediment transport and deposition, evidence for large-scale mass instability within elements of the canyon fill, and stratigraphic relations adjacent to the canyon wall, where evidence exists for alternate erosion and re-sedimentation of the canyon fill. Applications to exploring for hydrocarbon reservoirs in similar deposits will be a recurring theme throughout the trip. The finer-grained component of the fill preserves a complex assemblage of trace fossils, some of which are nearly exclusive to this locality. Because Point Lobos is a State Reserve, rock hammers and collecting are not permitted.



FIELD TRIP INFORMATION

Trip Options: You can sign up for either one or both days. See registration form printed back-to-back with PS-SEPM membership form on pp. 11-12 of this newsletter. **Bring your lunch for the day(s) you attend. Beverages (water, sodas, tea) will be provided.**

A PS-SEPM membership form is on the reverse side of the registration form (p. 12). Renew your membership (if needed) or join to register for field trip at membership price.

Please note there is an absolute maximum of 50 people for each day, so register early to secure your spot.

Registration DEADLINE is September 21 (see Registration form, p. 11).

No alcoholic beverages will be allowed on trip.

Bring your own lunch both days.

Water and non-alcoholic beverages will be provided.

Register early to secure your spot.

Where & when to meet:

Day 1. Meet in parking lot, SLAC, where participants will park private vehicles, be greeted by leaders, and check in for **9:00 a.m.** departure on Stanford University bus for the geologic tour of the site. Car-pooling to SLAC is encouraged. **Be sure to bring your own lunch. Water and non-alcoholic beverages will be provided.** Trip will end at about 4:00 p.m.

Day 2. Park outside Pt. Lobos State Reserve on ocean (southbound) side of Highway 1 (ample parking about ¼-mile north and south of the reserve entrance) and walk in. Participants will assemble inside entrance gate, meet leaders, and check in for **9:30 a.m.** departure on **walk** to field trip stops. The walking route will cover a distance of about 3 non-strenuous miles. Trip will end at about 4:00p.m. **Bring your own lunch.**

Camping: Should you “out-of-towners” wish to camp, a group reservation has been made at the Veterans Memorial Park Campground in Monterey. See map on next page for location and directions. If you camp at Veterans Memorial Park, a \$4.00 camping fee/person/night for reserved spot **must be paid with your registration** (see registration form, p. 11, and deadline of September 21).

PLEASE REMEMBER THAT LUNCHES & SNACKS WILL NOT BE PROVIDED.

A message from new PS-SEPM President, Richard J. "Rick" Behl



Dear Friends and Colleagues,

It has been my honor to serve as President of the Pacific Section SEPM (Society for Sedimentary Geology) this past year. I've had the opportunity to work with experienced stalwarts of the society, as well as newly recruited, energetic volunteers. This society has a long and impressive history of advancing and spreading scientific understanding of the sedimentary record of western North America and the Pacific basin. Led by a succession of generous and dedicated scientists and educators, your society has sponsored yearly symposia at professional meetings, led terrific field trips, and published more than 100 well-cited symposium and field guide volumes that are assigned ISBN numbers, are indexed in GeoRef and other journal databases, and are found in university, corporate, and personal libraries around the world (see <http://www.sci.sdsu.edu/pacsepm/>). A number of these publications formed the background for my own dissertation research, and this connection drew me to volunteer for this position. This amazing legacy continues – this past year, your society led a fall field trip to the Palos Verdes Peninsula (Los Angeles) and played an active role in the very successful AAPG-SEPM Annual Meeting in Long Beach this past spring. We sponsored three great field trips: Kenn Ehman and Morgan Sullivan's trip to the Ridge Basin, Kirt Campion, Anthony Sprague, and Morgan Sullivan's trip to San Clemente, and Dick Brown's trip to the Palos Verdes Peninsula.

As I write this message, we are also approaching the publication of another book in the PS-SEPM series: book 103, *Geology and Paleontology of Palos Verdes Hills, California: A*

60th Anniversary Revisit to Commemorate the 1946 Publication of U. S. Geological Survey Professional Paper 207. This will be a tribute to W.P. Woodring, M.N. Bramlette, and W.S.W. Kew, their classic 1946 USGS Professional Paper 207, and will include 17 original papers on the sedimentary, metamorphic, tectonic, economic, and engineering geology of the peninsula.

In spite of these accomplishments, your society is troubled by diminishing membership, lagging renewal of members' dues (only \$7.50/year!), and reduced member participation in the leadership of the society. This is likely explained by a number of trends over the past 20 years: 1). generally reduced enrollments in geology/earth science programs in our universities (this is rebounding on many campuses!), 2). the migration of many petroleum geologists away from the west coast to Texas, and 3). academic specialization that distanced many young paleoclimatologists, paleo-oceanographers, and Earth systems scientists from their roots in sedimentary geology.

We need your energy and ideas to reverse these trends and re-engage your colleagues and students in the value of a society dedicated to the sedimentary geology of the Pacific margin. We need your input to define the future direction of the society and how we can best achieve our goals. The PS-SEPM Executive Committee - consisting of myself, Past-President Dave Andersen, President-Elect Kathie Marsaglia, Vice President Amy Draut, Managing Editor and Treasurer John Cooper and Secretary and Newsletter Editor Mario Caputo - have come up with a few ideas to get the ball rolling. For a start, PS-SEPM will be sponsoring 3 symposia at the 2008 Pacific sections meeting of AAPG-SEPM-SEG. Two of these are specifically designed to engage potential new members: "The Sedimentary Record of Climate Change in Western North America and the Pacific Rim" and "PS-SEPM Student Research in Sedimentary Geology." The third session will be "Using Stratigraphy, Sedimentology, and Geochemistry to Unravel the Geologic History of the Southwestern Cordillera: A Symposium In Honor of Patrick L. Abbott," a successor symposium to PS-SEPM Book #101.

I hope to see you on the Fall Field Trips to Point Lobos and Menlo Park this October 6 and 7. They promise to be great excursions to wonderful outcrops! Please see the field trip description and registration form elsewhere in this newsletter. Sign up soon, and bring your friends and students, your ideas and enthusiasm.

Rick Behl, President, Pacific Section, SEPM
California State University Long Beach

***Pacific Section Welcomes New Officers:
Amy Draut, Vice President and Kathie Marsaglia, President Elect***

Amy Draut, Research Geologist with the U.S. Geological Survey in Santa Cruz, CA, comes from a checkered background, involving a myriad of geologic disciplines loosely tied together under the theme of sedimentary geology in modern and ancient depositional systems. She received a BSc degree in geological sciences from Tufts University in 1999. Her PhD in geology and geophysics from the MIT/ Woods Hole Oceanographic Institution, completed in 2003, focused on fine-grained sedimentation on the northern Gulf of Mexico coast and shallow continental shelf. While in graduate school, she also developed a lasting interest in the evolution of volcanic arcs and arc-continent collisions, studying the tectonic, sedimentary, and geochemical evolution of arcs in the Ordovician Caledonide orogen of western Ireland and the Jurassic Talkeetna Formation of Alaska. Her recent work for the USGS includes investigating the role of aeolian sediment in the preservation of archaeological sites along the Colorado River corridor through the Grand Canyon, tracing fluvial sediment on the shallow shelf offshore of Santa Barbara, CA and on the north shore of Kauai, HI, and monitoring sediment grain size and channel topography of the lower Elwha River, WA in preparation for a major dam-removal project. She is currently tying together her interests in modern and ancient sedimentary processes by editing a GSA Special Paper on the sedimentary record in arc collision zones.

Kathie M. Marsaglia, Associate Professor of Geological Sciences at California State University, Northridge (CSUN), is versed in sandstone petrology, and marine sedimentation and tectonics. She completed her BSc and MSc in Geology at the University of Illinois, and followed with two years at Amoco Production in Houston. While in residence at UCLA for her PhD in the late 1980s, she developed sand provenance models from cores retrieved in volcanic arc terranes during the Circum-Pacific Deep Sea Drilling Program. After receiving her PhD from UCLA in 1989, she first taught at the University of Texas at El Paso, then worked as a Senior Reservoir Geologist at Westport International in Houston, and finally returned to teaching at CSUN in 2000. During her professional career, Kathie has participated in six cruise legs of the Ocean Drilling Program. Her current research involves understanding sand provenance in samples collected from New Zealand, Italy, South America, and southern California with students, and ceramic temper (sand) provenance in samples from New Guinea and the Caribbean with archaeology colleagues. She is a Fellow of GSA and an Associate Editor for SEPM's Journal of Sedimentary Research.



NEW 2007 PS-SEPM PUBLICATION coming this fall...



**GEOLOGY AND PALEONTOLOGY OF
PALOS VERDES HILLS, CALIFORNIA:**

**A 60th Anniversary Revisit to
Commemorate the 1946 Publication
of U. S. Geological Survey
Professional Paper 207**

Pacific Section SEPM Book 103

**edited by Arthur R. (Dick) Brown,
Roy J. Shlemon, & John D. Cooper**

CONTENTS

PREFACE AND ACKNOWLEDGMENTS

John D. Coopervi

A TRIBUTE TO W. P. WOODRING, M. N. BRAMLETTE, AND W. S. W. KEW

Roy J. Shlemon1

GEOLOGICAL OVERVIEW OF THE PALOS VERDES PENINSULA

Arthur R. (Dick) Brown5

**THE TECTONO-STRATIGRAPHIC EVOLUTION OF THE PALOS VERDES PENINSULA, SOUTHERN
CALIFORNIA**

Brian P. E. Olson23

PRELIMINARY PETROLOGIC STUDY OF THE CATALINA SCHIST IN THE PALOS VERDES HILLS

Gregory J. Holk and Arthur R. (Dick) Brown41

**THE MONTEREY FORMATION OF THE PALOS VERDES HILLS, CALIFORNIA: STRATIGRAPHY AND
DIAGENETIC IMPLICATIONS FOR BURIAL AND UPLIFT HISTORY**

Richard J. Behl and Shingo Morita51

THE PLEISTOCENE PALEONTOLOGY AND STRATIGRAPHY OF PALOS VERDES PENINSULA

Stephen E. Jacobs73

**PALEONTOLOGIC AND STRATIGRAPHIC REEVALUATION OF DEAD MAN ISLAND, FORMERLY IN
SAN PEDRO BAY, CALIFORNIA**

Charles L. Powell, II and Daniel J. Ponti101

**LATE PLEISTOCENE MARINE PALEOENVIRONMENTS OF TWO MOLLUSCAN BIOSOMES, EASTERN
PALOS VERDES PENINSULA, CALIFORNIA**

Mario V. Caputo121

**ARCHAEOLOGICAL SIGNIFICANCE OF THE MALAGA COVE SITE (CA-LAN-138), NORTHERN PALOS
VERDES HILLS, CALIFORNIA**

Mark L. Peterson143

**MARINE TERRACES OF THE PALOS VERDES HILLS, CALIFORNIA: THE GEOMORPHIC LEGACY OF
GLACIO-EUSTASY AND NEOTECTONICS**

Roy J. Shlemon171

LATE QUATERNARY UPLIFT OF THE PALOS VERDES TECTONIC BLOCK: EVIDENCE FROM HIGH-RESOLUTION SEISMIC IMAGING OF THE PALOS VERDES FAULT ON THE SAN PEDRO SHELF

Robert D. Francis and Mark R. Legg 189

TECTONIC ORIGIN OF THE CABRILLO FAULT: PALOS VERDES PENINSULA AND ADJACENT SAN PEDRO SHELF

John F. Schwiebert and Robert D. Francis 223

GEOLOGIC STRUCTURE AND EARTHQUAKE HAZARDS OF THE PALOS VERDES FAULT IN THE PALOS VERDES PENINSULA AND PORT OF LOS ANGELES/LONG BEACH AREAS, LOS ANGELES COUNTY, CALIFORNIA

Bruce A. Schell 233

OVERVIEW OF THE LANDSLIDES OF THE PALOS VERDES PENINSULA

Wayne D. Haydon 259

A HYDROLOGICAL ASSESSMENT OF GROUNDWATER SOURCES IN THE PORTUGUESE BEND AND ABALONE COVE LANDSLIDE AREAS, CALIFORNIA: IMPLICATIONS FOR LANDSLIDE MOVEMENT

Christi A. Hill, Robert G. Douglas, and Douglas E. Hammond 271

HISTORY OF OIL EXPLORATION AND MINERAL EXPLOITATION IN THE PALOS VERDES PENINSULA

Arthur R. (Dick) Brown and John F. Schwiebert 293

INTRODUCTION TO ANNOTATED BIBLIOGRAPHY OF THE GEOLOGY OF THE PALOS VERDES PENINSULA, CALIFORNIA: MORE THAN ONE THOUSAND CITATIONS FROM 1542 TO 2007

John F. Schwiebert 315

APPENDICES CD-ROM (Pocket)

1. BIBLIOGRAPHY WITH SEARCH CAPABILITIES

John F. Schwiebert CD-ROM (Pocket)

2. GEOCHEMICAL DATA TABLES (1,2,3), Appendix

Richard. J. Behl and Shingo Morita CD-ROM (Pocket)

3. GEOLOGIC MAPS OF PALOS VERDES PENINSULA FROM USGS PROFESSIONAL PAPER 207 (Plates 1, 14, 21)

..... CD-ROM (Pocket)

4. MARINE TERRACES MAP AND PROFILES, PALOS VERDES HILLS FROM USGS PROFESSIONAL PAPER 207 (Plate 22)

..... CD-ROM (Pocket)



New Project Proposed for Pacific Section – Donations are Invited

At the last meeting of the Executive Committee of Pacific Section SEPM in early July, 2007, held in the geology department at CSU Long Beach, the room was ablaze as fresh ideas were proposed with a goal of enticing new members, and renewing vitality and rekindling the spirit of the Society. John Cooper remarked that several Society publications are out-of-print, and together he and Rick Behl suggested that the Pacific Section undertake a project to resurrect these publications and make them accessible and available again. The plan to do so involves scanning original copies of the publications stored in the Society archives, and assembling electronic versions of them. Once the digital copies are made, they would then be accessed from the Society website or distributed on disk at no cost as incentive for either applying for new membership or maintaining a permanent membership in the Society. The high quality scanning would be done commercially. This endeavor is given the highest priority as a Society project, and the first publications slated for conversion to digital editions are the volumes in the Pacific Coast Paleogeography series, I and II. The Society invites any individual or corporation for monetary contributions to launch and sustain this worthwhile project. Please make checks payable to Pacific Section SEPM and send to:

John Cooper
PS-SEPM Treasurer/Managing Editor
Department of Geological Sciences
California State University, Fullerton
800 North State College Blvd.
Fullerton, CA 92834-6850

Please indicate that your donation is for the "Publication Resurrection Project." The Society thanks you in advance for your generous support.

Photo Highlights, Fall, 2006 Field Trip, A DAY ON THE SCENIC PALOS VERDES PENINSULA



A.



B.

Scenes from the Fall, 2006 field trip, *A DAY ON THE SCENIC PALOS VERDES PENINSULA*. A) Ed Steiner (left) and Dick Brown (right), discussing the Portuguese Bend Landslide, Del Cerro Park, Stop 5. Photo by Dave Andersen; B) Rick Behl on outcrop at base of cherty lithofacies of Altamira Shale member, Monterey Fm, Crenshaw extension, Stop 6. Photo by Dave Andersen

REGISTRATION FORM

Pacific Section SEPM Fall Field Trip 2007, **October 6 (SLAC) & 7 (Pt. Lobos)**

Please fill out one form **per person**. Required Registration fee includes: basic charge, fieldtrip guidebook; refreshments; **tour bus** transportation onsite for Day 1; **beverage refreshments provided -- BUT **BRING YOUR OWN LUNCH AND SNACKS****

Name _____

Mailing Address: _____

Phone _____; e-mail _____

Registration fee (**Required**): Registration deadline is **September 21**. Non-member/non-student can pay member price with a paid membership (see reverse side of this page for membership form).

Day 1 (SLAC) only:

Member PS-SEPM/non-student: \$60.00 _____

Non-Member PS-SEPM/non-Student \$68.00 _____

Student (Institution: _____) \$30.00 _____

Day 2 (Pt. Lobos) only:

Member PS-SEPM (non-student) \$40.00 _____

Nonmember PS-SEPM (non-student) \$48.00 _____

Student (Institution _____) \$20.00 _____

Both Days:

Member PS-SEPM (non-student) \$95.00 _____

Nonmember PS-SEPM) non-student) \$103.00 _____

Student (Institution _____) \$45.00 _____

Camping: Individual fee is \$4.00/person/night at reserved PS-SEPM group campsite at Veterans Memorial Park, Monterey (see map for locations). **Friday** \$4.00 _____ **Saturday** \$4.00 _____

(Camping may be available at Veterans Memorial Park without reservations if you decide to camp **after** the registration deadline (Sept. 21). **Total Camping** _____

Total: Make check (no cash or credit cards) payable to: **PS-SEPM** **Total:** _____

*******BRING OUR OWN LUNCH AND SNACKS (BOTH DAYS)*******

Mail this form w/check payable to **PS-SEPM** to be received by **no later than September 21**.

MAIL TO: John Cooper, Department of Geological Sciences, California State University, Fullerton, 800 North State College Blvd, Fullerton CA 92834-6850; (jcooper@fullerton.edu)

**Pacific Section – SEPM (Society for Sedimentary Geology)
Membership Form, 2007**

Renew ☐New Member ☐

Last Name	First Name	Middle Name or Initial
-----------	------------	------------------------

Preferred Mailing Address: <i>Business or Home – COMPLETE ONLY ONE</i>			
Business	Company or Teaching Institution		
	Street or P. O. Box #		
	City	State	Postal Code
Home	Street or P. O. Box #		
	City	State	Postal Code

Telephone	
Business	
Home	
FAX	

UPDATE Email Address

Employment	
Employer Name	
Job Title	

Education	
Highest Degree Earned	
Year Earned	
Institution	
Specialization	

State Certifications/Registrations

Regular Memberships (check ✓ one)	1-year professional	\$ 7.50	
	3-year professional	\$20.00	
	1-year student	\$ 5.00	
Lifetime Memberships (check ✓ age group)	20-40 years old	\$150.00	
	40-60 years old	\$100.00	
	60 years old and older	\$ 50.00	



Make check payable to "Pacific Section, SEPM" and send to:

John D. Cooper
PS-SEPM Treasurer/Managing Editor
Department of Geological Sciences
CSU Fullerton
Fullerton, CA 92834-6850

PLEASE HELP INCREASE MEMBERSHIP IN THE PACIFIC SECTION – SEPM.
COPY THIS FORM AND GIVE IT TO STUDENTS AND COLLEAGUES WHO SHARE AN INTEREST IN SEDIMENTOLOGY.

**PACIFIC SECTION-SEPM
MEMBERSHIP INFORMATION, 2007**

The Pacific Section SEPM has grown to become an international society with more than 600 members; attracting students and working professionals from the United States, mainly from California and other Pacific states including Hawaii and Alaska, and from Canada, Europe, Asia, and South America. Help maintain the vitality of the Pacific Section, SEPM by renewing your membership and recruiting new members, especially undergraduate and graduate students majoring in the geosciences. Please distribute copies of the membership form (**provided on the next page**) to colleagues and students who have an interest in sedimentary geology. The form is available also on the PS-SEPM website.

The year printed to the right of your name on the address label of the newsletter indicates the year up to which you have paid membership dues. If the year is 2007 or older, please renew your membership and remit dues in the category of your choice, either a 1 year membership for students or a 1- or 3-year membership for professionals. A **Lifetime Membership** is now available for a one-time dues payment. See schedule below for age and payment categories. Honorary and Lifetime Members (indicated by the abbreviations, Hon and Life, respectively, on mailing labels) are permanent members of the Society; they are exempt, of course, from further dues payments. Please send your membership application or renewal to:

**John D. Cooper
PS-SEPM Treasurer/Managing Editor
Department of Geological Sciences
California State University, Fullerton
Fullerton CA 92834-6850**

PLEASE UPDATE YOUR EMAIL ADDRESS WHEN YOU RENEW.

Membership Dues

Regular membership dues:

- \$ 7.50 for a 1-year professional membership**
- \$20.00 for a 3-year professional membership**
- \$ 5.00 for a 1-year student membership**

NEW!

Lifetime membership dues:

- \$150.00 for age group 20-40 years**
- \$100.00 for age group 40-60 years**
- \$ 50.00 for age group 60 years and older**



Good Reasons for Joining the Pacific Section SEPM

- The Pacific Section SEPM is one of the premier geological societies of western North America.
- Members benefit from discounts on superbly done field-trip guidebooks and special publications that address sedimentologic and stratigraphic aspects of the Pacific region of the United States.
- Your membership dues sustain the Society by helping defray costs of publications. They further help support the operation of the California Well Data Repository (for borehole logs, cores, cuttings, microfossils, and other data) in Bakersfield, California.
- A **Society Website** provides up-to-date information on officers and other members, field trips and conferences, short courses, publications, and job openings:

<http://www.sci.sdsu.edu/pacsepm>

BOOKMARK THE ABOVE WEB ADDRESS FOR QUICK AND READY REFERENCE

- **Society Newsletter, *Pacific Sedimentologist***, distributed quarterly to members by email and surface mail. It features news and events such as field trips and conferences that are planned throughout the calendar year. Please share any information pertinent to the Society by sending it to **Mario V. Caputo, Newsletter Editor** at mvcaputo@earthlink.net.