



**PACIFIC SECTION, SEPM**  
**THE SOCIETY FOR SEDIMENTARY GEOLOGY**

**President:**

**Raymond V. Ingersoll**  
Department of Earth and Space Sciences  
University of California, Los Angeles  
595 Charles Young Drive East, Box 951567  
Los Angeles, CA 90095-1567  
Phone: (310) 825-8634  
[ringer@ess.ucla.edu](mailto:ringer@ess.ucla.edu)

**Treasurer:**

**Adam Woods**  
Department of Geology  
California State University, Fullerton  
P.O. Box 6850  
Fullerton, CA 92834-6850  
Phone: (714) 278-2921  
[awoods@fullerton.edu](mailto:awoods@fullerton.edu)

**Newsletter Editor:**

**Eric D. Hendrix**  
Mission Geoscience, Inc.  
2082 Michelson Drive, Suite 400  
Irvine, Ca. 92612  
Phone: (800) 556-4774  
[edhendrix@missiongeo.com](mailto:edhendrix@missiongeo.com)

**Past President Emeritus**

**Senior Advisor For Life:**

**Gene Fritsche**  
California State University, Northridge  
18111 Nordhoff Street  
Northridge, CA 91330  
Phone: 818-677-1200  
[geneandsuef@dslextreme.com](mailto:geneandsuef@dslextreme.com)

**Vice President:**

**James Boles**  
Department of Earth Science  
University of California, Santa Barbara  
Webb Hall, BLDG 526  
Santa Barbara, CA 93106-9630  
Phone: (805)893-3719  
[boles@geol.ucsb.edu](mailto:boles@geol.ucsb.edu)

**Managing Editor:**

NEEDED

**Membership Manager:**

**Wayne Henderson**  
Department of Geology  
California State University, Fullerton  
P.O. Box 6850  
Fullerton, CA 92834-6850  
Phone: (714) 278-2972  
[whenderson@fullerton.edu](mailto:whenderson@fullerton.edu)

**President Elect:**

**Frank Corsetti**  
Department of Earth Science  
University of Southern California  
3651 Trousdale Pkwy  
Los Angeles, CA 90089  
Phone: (213)-740-6123  
[fcorsett@usc.edu](mailto:fcorsett@usc.edu)

**Secretary**

**Publication Sales Manager:**

**Mario V. Caputo**  
Department of Earth Sciences  
Mt. San Antonio College  
1100 North Grand Avenue  
Walnut, CA 91789  
Phone: (909) 594-5611 x4439  
[mvcaputo@earthlink.net](mailto:mvcaputo@earthlink.net)

**Past President:**

**Kathleen M. Marsaglia**  
Department of Geological Sciences  
California State University, Northridge  
18111 Nordhoff Street  
Northridge, CA 91330-8266  
Phone: (818) 677-6309  
Fax: (818) 677-2820  
[kathie.marsaglia@csun.edu](mailto:kathie.marsaglia@csun.edu)

**Webmaster:**

**Tony P. Carrasco**  
Department of Geological Sciences  
San Diego State University  
5500 Campanile Dr.  
San Diego, CA 92182-1020  
Phone: (619) 594-5589  
Fax: (619) 594-4372  
[tcarrasc@geology.sdsu.edu](mailto:tcarrasc@geology.sdsu.edu)

***PLEASE NOTE: This will be the LAST "Hard Copy" edition of the PS-SEPM Newsletter; all subsequent editions will be issued in electronic version ONLY.....(Details Inside)***

Eric D. Hendrix  
Newsletter Editor  
Pacific Section-SEPM  
Mission Geoscience Inc.  
2082 Michelson Drive  
Irvine, CA 92612

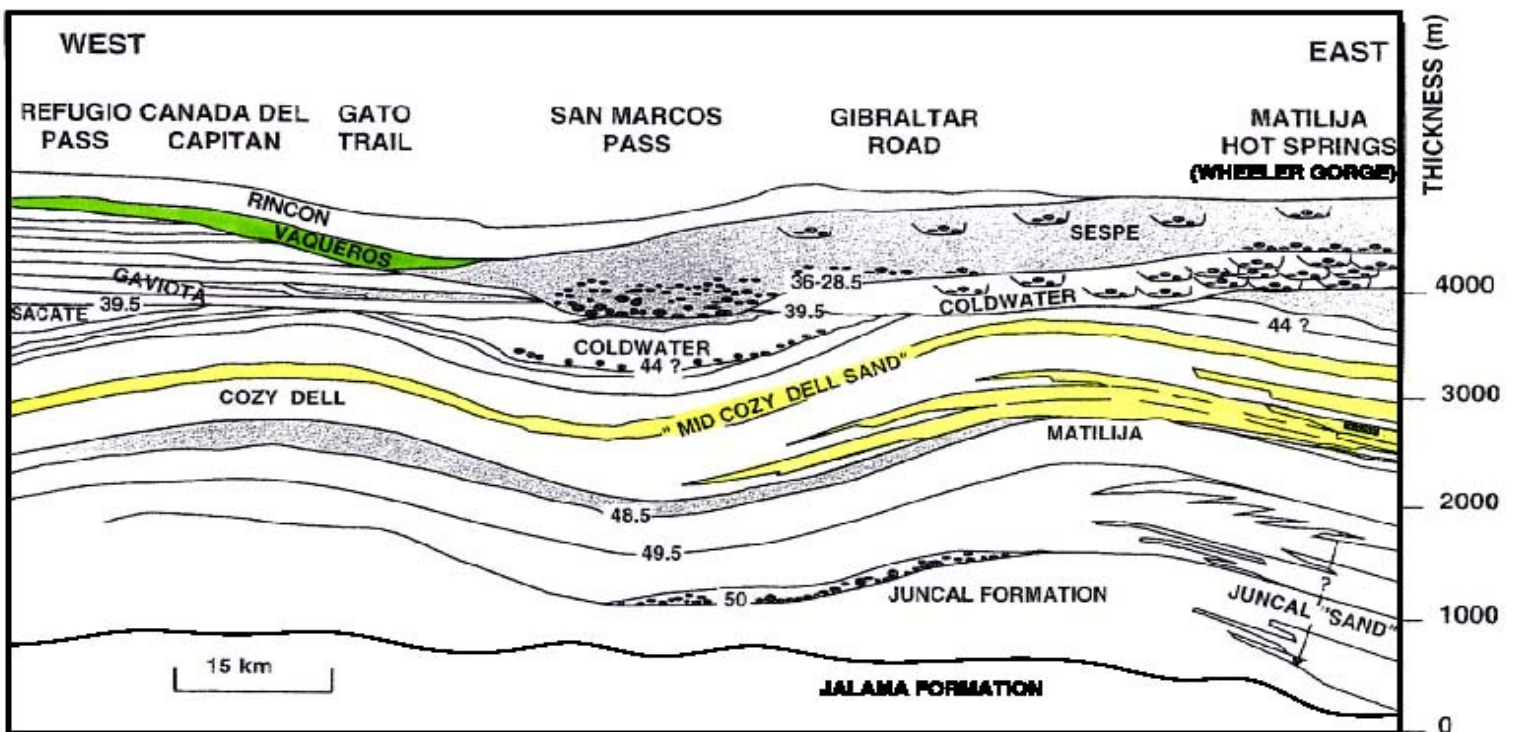
***SPRING 2009 CONVENTION ISSUE***



# PACIFIC SECTION

## *Pacific Sedimentologist* *SPRING CONVENTION ISSUE*

Newsletter of the Pacific Section, SEPM  
(Society for Sedimentary Geology)



*Generalized Stratigraphic Cross Section, Western & Central Transverse Ranges, depicting sequence stratigraphic framework and key unconformities amongst units which are the subject of field trips for the May 2-6 2009 Annual Joint Convention of the PS-SEPM, PS-AAPG and PS-SEG, Ventura, CA. (modified after Fig. 33, Campion, Sullivan, May & Warme, 1996 Field Conference Guide, PS-SEPM Book 80, P. Abbott & J. Cooper eds.)*

***PS-SEPM Joint Annual Convention with PS-AAPG and PS-SEG  
May 2 – 6, 2009, Ventura Beach Marriott, Ventura, CA***

**Please visit convention website :** [www.csun.edu/~hcgeo007/psaapgconvindex.htm](http://www.csun.edu/~hcgeo007/psaapgconvindex.htm)  
for details regarding sessions, field trips and short courses  
Also PS-SEPM web site: [www.sci.sdsu.edu/pacsepm](http://www.sci.sdsu.edu/pacsepm).

***A message from new PS-SEPM President, Raymond V. Ingersoll***

It is a privilege and an honor to, once again, serve as President of the most influential geological society of western North America! I am referring, of course, to the strangely named, but well known, Pacific Section, SEPM (Society for Sedimentary Geology). It is always worth a chuckle to explain to perplexed neophytes how SEPM can be an acronym for Society for Sedimentary Geology, but we are, after all, Earth historians, so we need to know a bit of history about both Earth and our society. Our archive of well cited publications is our single greatest legacy that will survive all of our members, who have contributed to and benefited from the PSSEPM in so many ways over so many years. I encourage all of you to visit our web site in order to learn more about your society, as well as to fill in missing information. Our able webmaster Tony Carrasco needs your help in order to complete our lists of past awardees and officers. Some of the Society's archives have been lost, so those of you with records and/or memories of past people and events are encouraged to contact Tony.

PSSEPM has changed considerably since I was last President (1987) (along with most aspects of life!). Our publications remain the envy of many organizations, and we regularly sponsor symposia, field trips and short courses at the annual spring meeting, and field trips in the fall. On the other hand, the demise of the petroleum industry in California relative to 1987 has meant decreased membership and fewer candidates for the officers needed to keep the Society running. I feel strongly enough about the need to maintain a strong PSSEPM, that I gladly accepted my spontaneous nomination during the 2008 fall field trip (three beers might have also influenced me!). It has been delightful interacting with the officers, both new and returning, because they all are equally dedicated to maintaining the excellence of PSSEPM. The other new officers are: President-Elect Frank Corsetti (USC), Vice President Jim Boles (UCSB), Treasurer Adam Woods (CSUF) and Newsletter Editor Eric Hendrix (Mission Geoscience). Retiring officers are: Rick Behl (CSULB), Morgan Sullivan (Chevron) and Gary Girty (SDSU). Returning officers (many with reassigned duties) are: Past-President Kathie Marsaglia (CSUN), Secretary and Publications Manager Mario Caputo (Mt. San Antonio College), Membership Manager Wayne Henderson (CSUF), Webmaster Tony Carrasco (SDSU), and Past President Emeritus and Advisor for Life Gene Fritsche. I thank all of these wonderful folks for past, present and future service to PSSEPM.

If you read the above carefully, you might have noticed that all positions on EXCOM are filled, except for MANAGING EDITOR! This position is critical to PSSEPM's success, and it is a big job. PLEASE, if you love to edit manuscripts and see them turn into beautiful and lasting publications, let me or one of the other officers know of your possible interest in this position. It is less of a daunting responsibility than was faced by our previous legendary Managing Editors Reinhard Suchsland and John Cooper for three reasons: 1. We publish fewer volumes, 2. Electronic preparation of manuscripts eases editorial tasks, and 3. Some of the former responsibilities of the Managing Editor are now assumed by the Publications Sales Manager. It is still a significant commitment of time and energy, but if you can do it, please let us know.

Our plans for 2009 include the usual mix of events in Ventura at the Annual Meeting, with PSAAPG and PSSEG, where I hope to see you all (and we apologize that you will not receive this newsletter much before the meeting). For the fall field trip, Jim Boles will lead a trip to Santa Cruz Island 17-20 September. Because of logistics on Santa Cruz Island, this trip will be limited in attendance, and relatively expensive; therefore, we are considering sponsoring a second field trip in the fall. All suggestions are welcome. Even northerners should consider the possibilities; why not have both southern California and northern California trips in the same year?

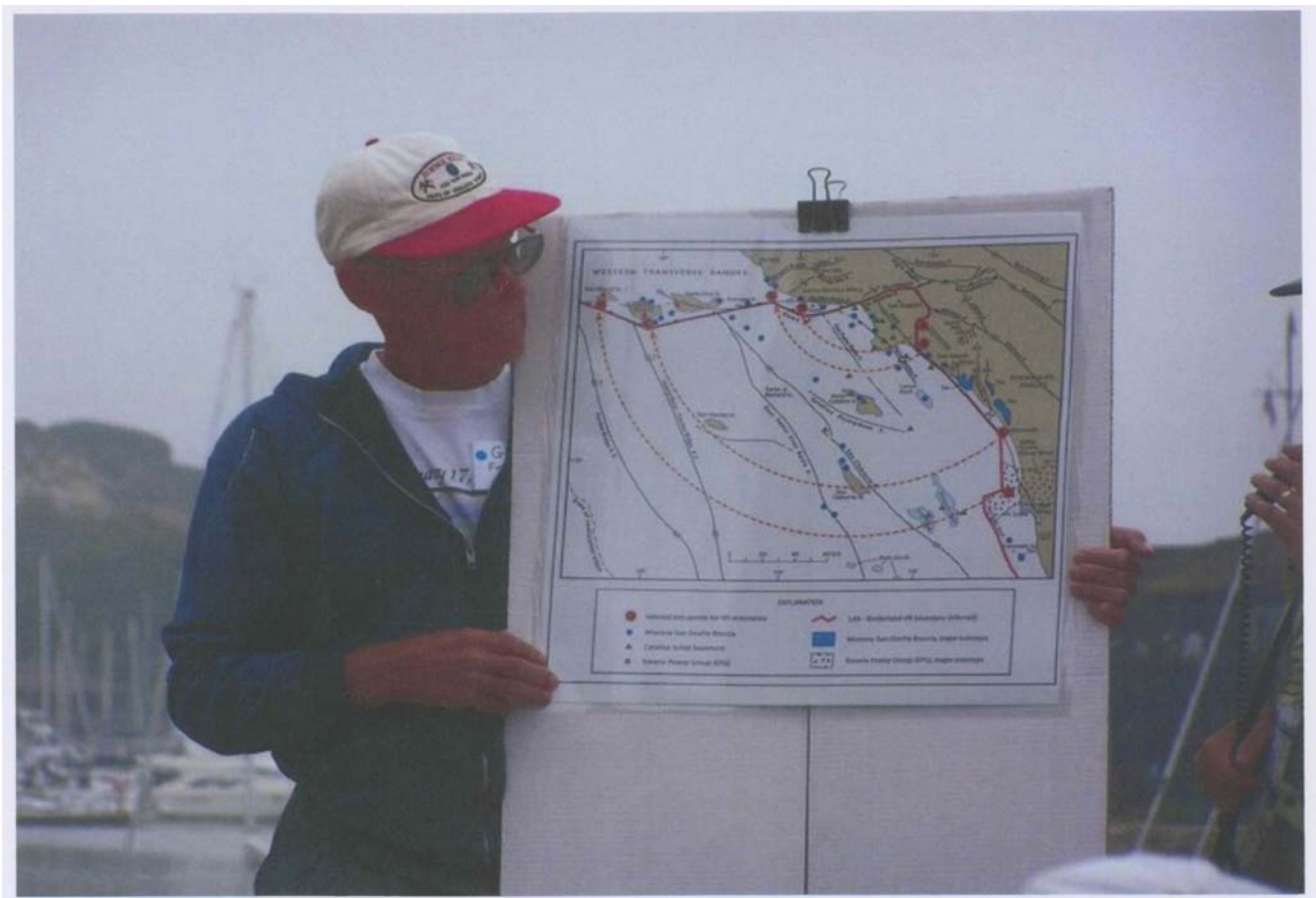
It is not too soon to be thinking about the spring 2010 Annual Meeting. It will be held jointly with PSAAPG, PSSEG and CSGSA (Cordilleran Section, Geological Society of America) in Anaheim. I have found such joint PSSEPM-PSAAPG-PSSEG-CSGSA-etc. meetings to be among the best geological meetings I have attended. The President of PSAAPG Don Clarke and I have discussed the possibility of making this a permanent arrangement, and GSA headquarters likes the idea. If we formalized this arrangement, then you would not need to choose between the Pacific and Cordilleran section meetings each spring because they would be the same thing!. It would mean more traveling to attend some of the meetings (e.g., occasionally Alaska, British Columbia, Mexico, Hawaii, etc.), but all of these areas are included in the Pacific Sections of AAPG and SEPM, so we should meet there. The chances for publications of guidebooks and symposium volumes (our specialty) would increase, and likely our membership would increase. As always, I would be delighted to hear your comments regarding this proposal.

See you in Ventura or on Santa Cruz Island or .....

**Ray Ingersoll, President, Pacific Section SEPM**  
University Of California, Los Angeles

### ***HIGHLIGHTS FROM THE PS-SEPM FALL FIELD TRIP, SEPTEMBER 13 -14, 2008***

#### **Geology of Orange County, California and the Irvine Ranch National Natural Landmark**



**Figure 1, Fall Field Trip, 2008. PS-SEPM Emeritus Advisor Gene Fritsche explains “The Truth”: (Mid-Miocene LA basin extension during transrotation of the western Transverse ranges). Dana Point Harbor breakwater. Photo courtesy of Wayne Henderson.**



If you didn't attend this super trip, here's what you missed:

- Fantastic weather
- Some classic geologic exposures and their latest interpretations
- Breathtaking scenery
- Outstanding western BBQ dinner
- Excellent leaders and instruction
- Shared memories of J.D. Cooper

An unmatched combination – but not all is lost. For a mere \$50.00 (member price; non-member price is \$55.00), you can purchase the outstanding full-color guidebook, PS-SEPM Book 106, *Geology of Orange County, California and the Irvine Ranch National Natural Landmark*, edited by A.E. Fritsche and R.J. Behl (2008) and do the trip on your own sometime. See the society web page for ordering information. Much of this guidebook was abridged from an 2006 full-color consultant's report originally prepared the National Park Service, prepared by John D. Cooper & Michael Sawlan. The field trip was held in honor and memory of John D. Cooper, for his many years of outstanding teaching, research and dedicated service to PS-SEPM.

The weekend of September 13<sup>th</sup> and 14<sup>th</sup> produced sensational weather and tide conditions for two glorious days of examination of superb sedimentary exposures along Silverado and Santiago Canyons in the northern Santa Ana Mountains, and the picturesque coastal cliffs of south Orange County. Over 70 registered participants, including students from seven different schools (UCLA, CSUN, CSLA, CSUF, CSULB, SDSU, MSAC), were treated to an expertly run and most informative two days of sedimentary geology at its finest. Fieldtrip leaders Gene Fritsche (Emeritus CSUN) and Rick Behl (CSULB), assisted by Ivan Colburn (Emeritus CSLA), ably guided the group through the depositional processes and tectonostratigraphic framework of diverse Upper Cretaceous through lower Pliocene units.

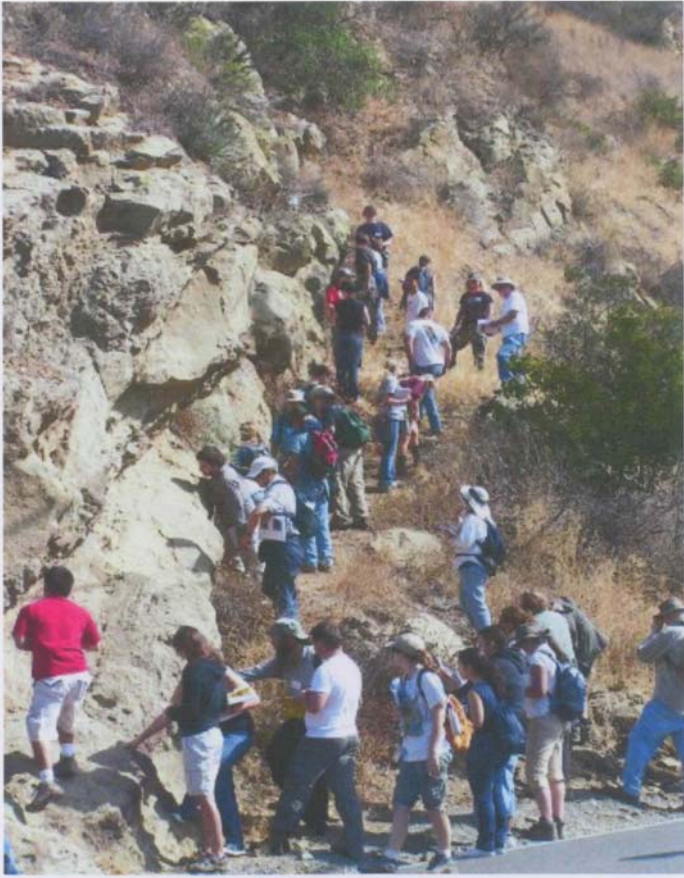
**Day 1** began in Silverado Canyon examining the nonmarine-to-marine transition along the eastern edge of the Upper Cretaceous forearc basin, represented by the conformable Trabuco and Ladd Formations (Baker Canyon Conglomerate and Holz Shale Members). Disorganized alluvial (debris flow) breccias of the Trabuco Formation pass upsection into more texturally mature sandstone and conglomerate of probable shoreface and inner shelf origin within the Baker Canyon Conglomerate Member of the Ladd Formation. Further upsection, the fossiliferous outer shelf and slope deposits of the Holz Shale Member (Ladd Formation) were observed.

Separated from the Cretaceous section by a significant unconformity were the fluvial channel and floodplain deposits of the middle Paleocene Silverado Formation. Trip participants observed evidence of intense weathering and probable humid

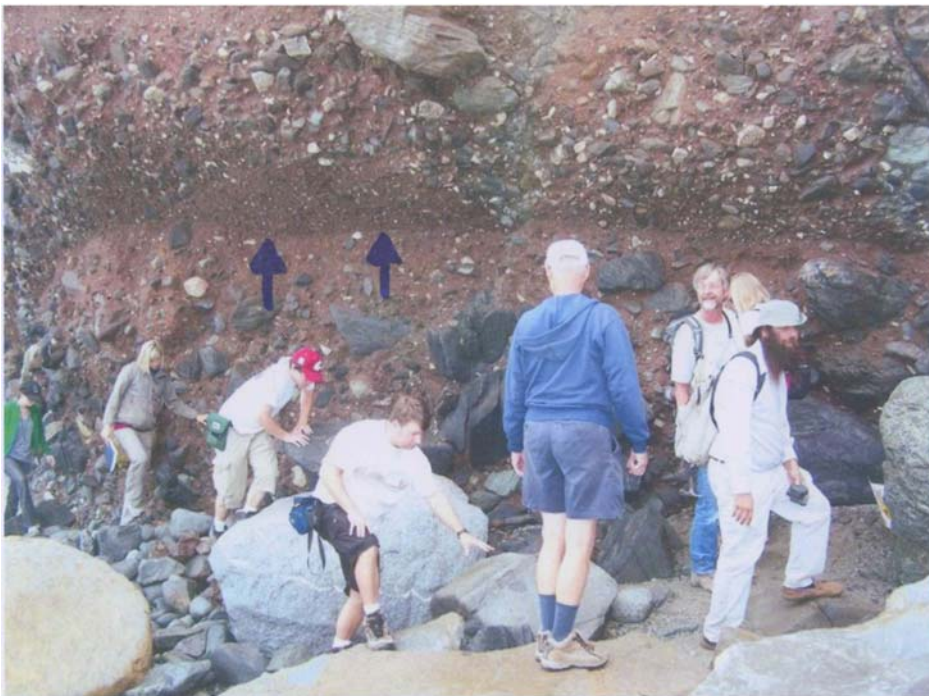
conditions in the form of iron-pisolite paleosols, kaolinitic clays and texturally mature fluvial sandstones. The middle Eocene Santiago Formation, upsection above a second major unconformity, exhibited evidence of a higher-sinuosity fluvial floodplain grading into a shallow marine paleoenvironment.

Braided fluvial channel deposits of the upper Oligocene Sespe Formation in Santiago canyon were next observed, displaying evidence of a more distant provenance and paleodrainage network. Participants then moved on to a terrific western BBQ dinner at Irvine Lake, and exposures of fluviodeltaic deposits of the lower Miocene Vaqueros Formation. This unit represents the final deposits of the residual forearc basin, prior to mid-Miocene extensional tectonic disruption.

**Day 2** focused on exposures of strata recording the Miocene extension and sedimentation within the Los Angeles Basin *sensu stricto* ("AnaVent Basin" of Fritsche, 1998). Participants observed coarse syn-extensional deposits of the mid-Miocene San Onofre Breccia at Dana Point Harbor. Textbook features of debris flow sedimentation were observed, in a probable alluvial fan or fan-delta environment, and evidence of a unique western provenance of Catalina Schist (see photo). The classic nested submarine channel deposits of the upper Miocene Capistrano Formation were visited next, and their precise depositional environment debated. Participants next travelled to the spectacular sea cliffs of Crystal Cove State Park, to observe mid-Miocene syn-extensional andesites and slope deposits of the bathyal Monterey Formation, including evidence of soft-sediment deformation and various diagenetic features including chert and large dolomitic concretions. Finally, the trip wrapped up with a visit to Heisler Park along the sea cliffs in Laguna Beach, to witness shoreface and shelf sandstone deposits of the mid-Miocene Topanga Formation. At this final stop, trip leaders Fritsche and Behl produced exceptional exhibits with which they described the larger tectono-stratigraphic evolution of the Los Angeles Basin during Miocene microplate capture, transrotation of the Transverse Ranges and resultant extensional disruption of the earlier Cretaceous-Paleogene forearc basin. It was a superb summary integrating features observed on both days of this great trip. Thank you to all who organized, presented and attended this field trip. Photos are posted on the PS-SEPM web site.



**Figure 2: Upper Cretaceous Baker Canyon Conglomerate Member of the Ladd Formation, Silverado Canyon. Shallow marine (shoreface and inner shelf) deposits along eastern edge of forearc basin. Photo courtesy of Wayne Henderson.**



**Figure 3: Mid-Miocene (Relizian) San Onofre Breccia at Dana Point Harbor, CA. Amalgamated debris flow deposits displaying well-developed inverse-to-normal grading. Majority of clasts from now-submerged western source area consisting of Catalina Schist. Arrows denote bedding plane. Day #2, 2008 fall Field Trip. Photo courtesy of Wayne Henderson**

## ***PRELIMINARY ANNOUNCEMENT:***

### ***Pacific Section SEPM Fall Field Trip To Santa Cruz Island***

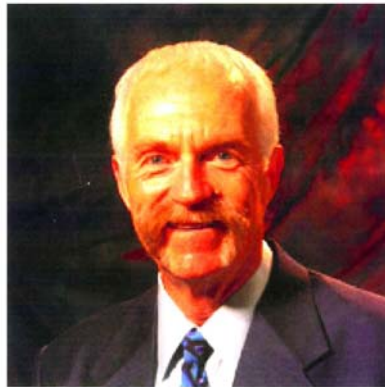
***September 17-20, 2009***

***Field Trip Leader: Jim Boles, UC Santa Barbara***

The PS-SEPM will visit the spectacular geology of Santa Cruz Island for our fall 2009 field trip. This “offshore” trip will function as the “companion piece” to the “onshore” exposures of the 2008 trip, in that we will observe more evidence of Mesozoic-Paleogene convergent margin – forearc sedimentation disrupted by Neogene transrotational-extensional tectonics and sedimentation, albeit on the opposite (northern) side of the rotated/extended domain. PS-SEPM Vice President Jim Boles will be our primary trip leader. Considering that the Island is part of a National Park, crowds are expected to be minimal and wildlife expected to be abundant. However, given the logistics for a 3-day offshore trip, available attendance for will be somewhat limited, so interested parties should be on notice!

Further details, travel logistics and Registration Information for what promises to be an excellent trip will appear within the next Newsletter (early August), which will be issued in ELECTRONIC FORMAT ONLY, and also on the society web site.

### ***Pat Abbott Honored With Lifetime Achievement Award***



During the proceedings of the Spring 2008 Joint Annual Meeting of PS-SEPM, PS-AAPG and Western Regional SEG, Patrick L. Abbott, Emeritus Professor at San Diego State University, and Past PS-SEPM President, was presented with the A. Eugene Fritsche Lifetime Achievement Award from PS-SEPM. This is a truly well-deserved honor, as anyone will testify who knows Pat and who is familiar with his many accomplishments as a researcher, author, field trip leader, teacher and supervisor of numerous theses on California tectonics and sedimentation, petrology, paleogeography, and natural hazards. Well-known and well-cited PS-SEPM publications which Pat has edited and co-authored include the classic “San Diego volumes” (*Eocene Depositional Systems – San Diego, 1979* and *Eocene Geologic History, San Diego Region, 1991*), and he has most recently been honored (2006) with an entire volume dedicated to him, *Using Stratigraphy, Sedimentology and Geochemistry To Unravel The Geologic History of the Southwestern Cordillera* (PS-SEPM Book #101). Thank you again, Pat, for your many years of fine contributions and your dedication to PS-SEPM.

## ***PS-SEPM Newsletter Changes To Electronic Format***

Immediately following the Fall 2008 Field Trip, the Executive Committee (EXCOM) of PS-SEPM met to discuss regular society business. During this meeting, it was agreed upon that the Spring 2009 Newsletter (this volume) would be the FINAL HARDCOPY EDITION of the Newsletter. This was voted upon for several reasons, including an interest in our participation in the “greening of America”, our interest in keeping step with other professional geological societies (most of whom have already made the “hardcopy-to-Ecopy” transition), and the added flexibility and ease of publication/reproduction of color figures and photographs (e.g., this edition of the Newsletter).

The EXCOM is finalizing details of electronic Newsletter distribution. Distribution may be either as a zipped file attachment to an e-mail, or alternatively an e-mail link to a dedicated spot on the society’s web page where the Newsletter will be located for download and printing, along with archived earlier Newsletters.

## ***PS-SEPM Joint Annual Convention with PS-AAPG and PS-SEG May 2 – 6, 2009, Ventura Beach Marriott, Ventura, CA***

### ***FIELD TRIP PROGRAM (Visit PS-SEPM WebSite for More Details)***

***Trips #1 and #2 – SOLD OUT.***

***Trip #3 – Seep Tour, Geology, and Whale Watching: Santa Barbara Channel—Coal Oil Point Area, California – Leaders: Mike Wracher (Venoco) and Mike Edwards (Venoco) – Meeting location described below – Depart at 8:30 am; Return at 12:30 pm – Trip Fee: \$25.00 for adults; \$15.00 for children 12 and under – Trip Limit: 75 – Sponsor: Los Angeles Basin Geological Society***

***Trip #4 – Unique Sedimentary Environments in the Tertiary of the Transverse Ranges – Leaders: Gene Fritsche (Emeritus, California State University, Northridge) and Tony Reid (Vintage Production California LLC) – Depart from Ventura Beach Marriott – Depart at 8:00 am; return at 5:00 pm – Trip Fee: \$60.00 for professionals; \$30.00 for students – Trip Limit: 40 – Sponsor: Coast Geological Society.***

***Cautionary note:*** This trip will not be examining road cuts. It involves a total walking distance of about 4 miles, some of it on trails and some of it cross country along the Sespe Creek floodplain. We will have to wade across Sespe Creek four times, and participants need to come prepared with a spare pair of footwear suitable for wading across a rocky stream bed.



***PS-SEPM Joint Annual Convention with PS-AAPG and PS-SEG  
May 2 – 6, 2009, Ventura Beach Marriott, Ventura, CA  
(NOTE: Full abstracts of all talks may be viewed on Convention website)***

**SALON III – MONDAY MORNING**

***New Insights into Recent and Past Global Climate Change – Session Chair: Tessa Hill –  
SPONSORED BY Pacific Section SEPM***

**0820–0840**

Carbonate Associated Sulfate as a Proxy for Lake Volume Fluctuations, Walker Lake, Nevada – *Berelson, W. M., Corsetti, F. A., Frantz, C., and Petryshyn, V.*

**0840–0900**

Late Pleistocene California Droughts during Deglaciation and Arctic Warming – *Oster, J. L., Montanez, I. P., and Sharp, W. D.*

**0900–0920**

Abrupt Climate Change and Millennial-Scale Oscillations in Marine Sedimentary Geochemistry at 300 and 700 ka, Santa Barbara Basin, California – *Afshar, S., Behl, R. J., Kennett, J. P., and the R/V Melville SBCore Team*

**0920–0940**

Recent Studies Help Extend the Ultra-High-Resolution Global Climate Record from Santa Barbara Basin Back to Pliocene Time – *Nicholson, C., Kennett, J. P., Behl, R. J., Sorlien, C. C., and the R/V Melville SBCore Team*

**0940–1000**

Orbital-Scale Cyclicity in Seismic Reflections and Sediment Character as a Climate Proxy in the Plio-Pleistocene Middle Pico Formation, Santa Barbara, California – *Peterson, C. D., Behl, R. J., Nicholson, C., Lisiecki, L. E., and Sorlien, C. C.*

**1000–1020**

The Role of Reactive Phosphorus Regeneration in Cretaceous Oceanic Anoxic Events – *Scampavia, M. R., and Faul, K. L.*

***New Insights into Exploration Technology – Session Chair: Colleen Barton – SPONSORED BY  
Pacific Coast Section SEG***

**1040–1120**

Reservoir Geomechanics — Implications for Reservoir Fracture Permeability and Fault Seal Integrity – *Barton, C., and Moos, D.*

***PS-SEPM Joint Annual Convention with PS-AAPG and SEG  
May 2 – 6, 2009, Ventura Beach Marriott, Ventura, CA***

***SALON III – MONDAY AFTERNOON***

***New Insights into Sedimentology of the Pacific Region – Session CoChairs: Ray Ingersoll and Kathie Marsaglia – SPONSORED BY Pacific Section SEPM***

**1340–1400**

Sulfur and Carbon Isotopic Composition and Carbonate Associated Sulfate Concentration of Calcitic Concretions of the Upper Cretaceous Holz Shale, Silverado, California – *Loyd, S. J., and Corsetti, F. A.*

**1400–1420**

Occurrence of Vaterite in CO<sub>2</sub> Well Bore Gas-Rich Environments: A New Process of Carbonate Formation – *Boles, J. R.*

**1420–1440**

New Insights from Uniformitarianism Applied to Hauterivian-Barremian Organic Carbon-Rich Mudstones of Arctic Alaska – *Keller, M. A., and MacQuaker, J. H. S.*

**1440–1500**

Lithofacies Prediction for “Linked-Debrites” in a Mud-Rich Deep-Water Setting, Onshore Eel River Basin, Northwestern California – *Greene, T. J., and Gordon, G.*

**1500–1520**

Detrital Zircons and Sandstone Petrofacies of the Sespe Formation, Southern California – *Spafford, C. D., Ingersoll, R. V., and Grove, M.*

***New Insights into Exploration Technology – Session Chair: Bill Pramik – SPONSORED BY Pacific Coast Section SEG***

**1540–1600**

Improving the Imaging Capability and Interpretability of Seismic Data through Proper Parameter Selection – *Pramik, W. B.*

**1600–1620**

An Empirical Approach to Understanding Rock Lithology and It’s Relationship to Minimum Horizontal Stresses for Fracture Stimulation Design – *Leshchyshyn, T. H., Barba, R., Baird, K., and Beadall, K.*

**1620–1640**

Maximum-Reservoir-Contact Wells for Coal Bed Methane Exploitation – *Finn, C. M., Seely, D., and Martin, J.*

**1640–1700**

Does 3D Seismic Acquisition Impact Giant Kangaroo Rat Populations? A study in the BLM Lokern Parcel, Kern Co., California – *Walker, C.E.B., Ashley, J., Dixon, W., and Sine, C. R.*

***PS-SEPM Joint Annual Convention with PS-AAPG and SEG  
May 2 – 6, 2009, Ventura Beach Marriott, Ventura, CA***

***SALON III – TUESDAY MORNING***

***Modern Sea-Floor and Quaternary Turbidite Systems Offshore the Western Margin of the United States in Honor of Bill Normark – Session CoChairs: Jacob Covault and Andrea Fildani – SPONSORED BY Pacific Section SEPM***

**0800–0820**

Modern Turbidite System Depositional Patterns Revisited – *Nelson, C. H.*

**0820–0840**

Morphology of a Saline Gravity-Flow Channel on the SW Black Sea Shelf from Multibeam Bathymetry, and Preliminary Monitoring of Transiting Currents – *Hiscott, R. N., Aksu, A. E., Flood, R. D., Parsons, D. R., Peakall, J., and Moulard, D.*

**0840–0900**

Pockmarks on the Modern Seafloor as Indicators of Submarine Canyon Abandonment, Offshore Equatorial Guinea – *Jobe, Z. R., and Lowe, D. R.*

**0900–0920**

Where Did They Go and How Big Were They? Latest Pleistocene-Age Catastrophic Floods and Their Deposition in the NE Pacific Ocean – *Reid, J. A., and Normark, W. R.*

**0920–0940**

**BREAK**

**0940–1000**

Axial Channels of Submarine Canyons Off California – *Paull, C. K., Caress, D., Ussler, W., III, Lundsten, E., and Thomas, H.*

**1000–1020**

The Monterey Fan Channel Turbidite Record Offshore Central California: Insights into Submarine Canyon Processes – *Johnson, J. E., Paull, C. K., Normark, W. R., and Ussler, W.*

**1020–1040**

Quaternary Turbidite Deposits Off Central California Provide Evidence of Source of Downslope-Displaced Benthic Foraminifera and Hydraulic Sorting of Playnomorphs – *McGann, M.*

**1040–1100**

Sandy Turbidite Distribution Patterns and Estimated Flow Velocities in Santa Monica Basin, Southern California Continental Borderland – *Hogan, P. J., Romans, B. W., Varnell, S., and Broughton, A.*

**1100–1120**

Growth Patterns of Deep-Sea Fans Revisited: Turbidite-System Morphology in Confined Basins of the Quaternary Borderland – *Covault, J. A., and Romans, B. W.*

***PS-SEPM Joint Annual Convention with PS-AAPG and SEG  
May 2 – 6, 2009, Ventura Beach Marriott, Ventura, CA***

***SALON III – TUESDAY AFTERNOON***

***Making the Link from Modern to Ancient Turbidite Systems: An Integrated Approach in Honor of Bill Normark – Session CoChairs: William Morris and Brian Romans – SPONSORED BY Pacific Section SEPM***

**1340–1400**

Comparing Modern and Ancient Turbidite Channel and Channel-Like Elements: Insight and Issues for Developing a First Principle Approach to Exploitation of Deep-Water Reservoirs – *Morris, W. R.*

**1400–1420**

Slurry Flows vs Turbidity Currents: A Key Distinction in Evaluating the Reservoir Potential of Thin-Bedded Deepwater Sequences, Modern and Ancient – *Lowe, Donald R.*

**1420–1440**

Sediment Waves: Are They Cyclic Steps or Antidunes? – *Kostic, S.*

**1440–1500**

Alloccyclicity of Sediment Volume and Composition Provide the Basis for a Predictive Model of Turbidite Channel Architectures – *McHargue, T., Clark, J., Sullivan, M., Pyrcz, M., Fildani, A., Levy, M., Posamentier, H., Romans, B. W., and Covault, J. A.*

**1500–1520**

**BREAK**

**1520–1540**

Characterization of the Continental Slope and Headscarp of the Palos Verdes Debris Avalanche Based on New High-Resolution Seismic Reflection Data – *Dame, R. D., and Hogan, P.J.*

**1540–1600**

Sandy Facies at ODP Site 893 in the Santa Barbara Basin and Implications of Proposed Drilling by the Integrated Ocean Drilling Program – *Marsaglia, K. M., Behl, R. J., and Escobedo, D.*

**1600–1620**

Observations from Modern Channel-Levee Systems and Their Utility for Interpretation of Ancient Levee Systems in the Cerro Toro Formation (Cretaceous), Chile – *Campion, K. M.*

**1620–1640**

Wine-Making Conversations About Where Have All the Humongous Deposits of Oceanic Turbidite Systems Gone? – *Scholl, D. W., and Normark, W. R.*

**1640–1700**

Memorial Tribute to Bill Normark – *Covault, J. A., Fildani, A., Morris, W. R., and Romans, B. W.*



**PACIFIC SECTION-SEPM  
MEMBERSHIP INFORMATION, 2009**

The Pacific Section SEPM has grown to become an international society with more than 600 members, attracting students and working professionals from the United States, mainly from California and other Pacific states including Hawaii and Alaska, and from Canada, Europe, Asia, and South America. Help maintain the vitality of the Pacific Section, SEPM by renewing your membership and recruiting new members, especially undergraduate and graduate students majoring in the geosciences. Please distribute copies of the membership form (**provided on the next page**) to colleagues and students who have an interest in sedimentary geology. The form is available also on the PS-SEPM website.

TA **Lifetime Membership** is also available for a one-time dues payment. See schedule below for age and payment categories. Honorary and Lifetime Members (indicated by the abbreviations, Hon and Life, respectively, on mailing labels) are permanent members of the Society; they are exempt, of course, from further dues payments. Please send your membership application or renewal to:

**Wayne Henderson, PS-SEPM Membership Manager  
Department of Geological Sciences  
California State University, Fullerton  
Fullerton CA 92834-6850**

**PLEASE UPDATE YOUR EMAIL ADDRESS WHEN YOU RENEW.**

**Membership Dues**

**Regular membership dues:**

**\$ 7.50 for a 1-year professional membership**  
**\$20.00 for a 3-year professional membership**  
**\$ 5.00 for a 1-year student membership**

**Lifetime membership dues:**

**\$150.00 for age group 20-40 years**  
**\$100.00 for age group 40-60 years**  
**\$ 50.00 for age group 60 years and older**

**Good Reasons for Joining the Pacific Section SEPM**

- The Pacific Section SEPM is one of the premier geological societies of western North America.
- Members benefit from discounts on superbly done field-trip guidebooks and special publications that address sedimentologic and stratigraphic aspects of the Pacific region of the United States.
- Your membership dues sustain the Society by helping defray costs of publications. They further help support the operation of the California Well Data Repository (for borehole logs, cores, cuttings, microfossils, and other data) in Bakersfield, California.
- A **Society Website** provides up-to-date information on officers and other members, field trips and conferences, short courses, publications, and job openings:

**<http://www.sci.sdsu.edu/pacsepm>**

**BOOKMARK THE ABOVE WEB ADDRESS FOR QUICK AND READY REFERENCE**

**Pacific Section – SEPM (Society for Sedimentary Geology)  
Membership Form, 2009**

Renew

New Member

Last Name	First Name	Middle Name or Initial
-----------	------------	------------------------

Preferred Mailing Address: <i>Business or Home – COMPLETE ONLY ONE</i>			
<b>Business</b>	Company or Teaching Institution		
	Street or P. O. Box #		
	City	State	Postal Code
<b>Home</b>	Street or P. O. Box #		
	City	State	Postal Code

Telephone	
Business	
Home	
FAX	

<b>UPDATE</b> Email Address
-----------------------------

Employment	
Employer Name	
Job Title	

Education	
Highest Degree Earned	
Year Earned	
Institution	
Specialization	

State Certifications/Registrations
------------------------------------

<b>Regular Memberships</b> <small>(check ✓ one)</small>	1-year professional	\$ 7.50	
	3-year professional	\$20.00	
	1-year student	\$ 5.00	
<b>Lifetime Memberships</b> <small>(check ✓ age group)</small>	20-40 years old	\$150.00	
	40-60 years old	\$100.00	
	60 years old and older	\$ 50.00	



Make check payable to "Pacific Section, SEPM" and send to:

Wayne Henderson  
PS-SEPM Membership Manager  
Department of Geological Sciences  
CSU Fullerton  
Fullerton, CA 92834-6850

<p><b>PLEASE HELP INCREASE MEMBERSHIP IN THE PACIFIC SECTION – SEPM. COPY THIS FORM AND GIVE IT TO STUDENTS AND COLLEAGUES WHO SHARE AN INTEREST IN SEDIMENTOLOGY.</b></p>
--