

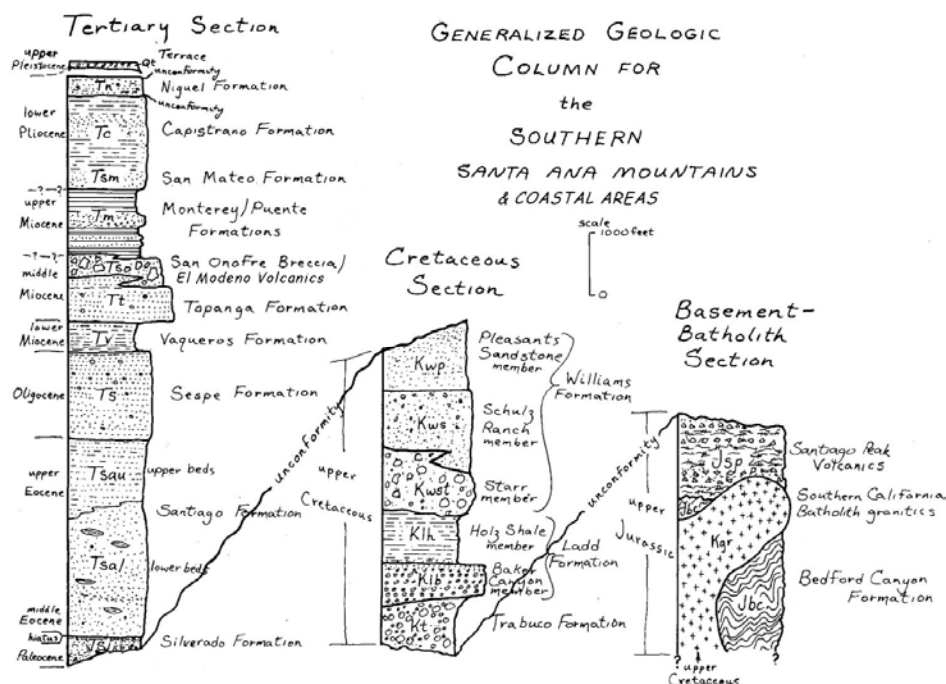
Pacific Sedimentologist

Newsletter of the Pacific Section SEPM
(Society for Sedimentary Geology)



PACIFIC
SECTION

Fall Events Issue



Generalized geologic column for the southern Santa Ana Mountains and Coastal Areas (modified from Miller, R. V., 1979, Geologic guide to the west-central Santa Ana Mountains, Orange County, California, in Fife, D. L., ed., Geologic Guide of San Onofre Nuclear Generating Station and Adjacent Regions of Southern California: Pacific Sections AAPG, SEPM, SEG, guidebook 46, p. c-1 - c-28).

volume 80, issue 2

August, 2008

Announcements in this issue....

Fall Field Trip Information and Registration:

Geology of the Irvine Ranch
National Natural Landmark, Orange County, California

Honoring the late John D. Cooper,
Emeritus Professor of Geology, CSU Fullerton

Saturday and Sunday, September 13-14, 2008

AAPG Student Expo at CSU Northridge

September 25-27, 2008

Membership Survey

***Nominations requested for President, President Elect,
Vice President, and Treasurer of the Pacific Section SEPM***

Pacific Section SEPM Fall Field Trip 2008

Geology of the Irvine Ranch National Natural Landmark, Orange County, California

MEMORIAL DEDICATION

This year, the annual fall field trip of the Pacific Section SEPM will be in memory of John D. Cooper, Emeritus Professor of Geology at California State University, Fullerton. As many of you know, John was the long-time Publications Manager, Treasurer, and all-around activist and organizer of events for the Pacific Section. One of the more recent and most outstanding things he did while he was still here among us was to research and write a report on the geology of land at Irvine Ranch that was being considered for National Natural Landmark status for the federal government. His report was printed and circulated in a loose-leaf binder for those concerned with the project and the result was the establishment of the Irvine Ranch National Natural Landmark. The report was such a tremendous piece of work that the Pacific Section Executive Committee secured permission from the federal government to publish it and make it available to the general public. This published report comprises the bulk of the field trip guidebook. Most of the rock units exposed in Orange County and described in the report will be examined during the field trip.

GENERAL ITINERARY

The field trip will begin **Saturday, September 13**, and end **Sunday, September 14**. Emphasis on the trip will be to learn the stratigraphic history of Orange County, to observe the lithology, fossils, and architecture of sedimentary rocks, and to interpret depositional environments of rock units examined. On Saturday morning, we will visit exposures along Silverado Canyon of the Upper Cretaceous Trabuco Formation, Baker Canyon Member and Holz Shale Member of the Upper Cretaceous Ladd Formation, Schulz Ranch Member of the Upper Cretaceous Williams Formation, and the Paleocene Silverado Formation (Fig. 1). During the afternoon on Saturday, we will study the Middle Eocene Santiago Formation in Silverado Canyon, the Upper Eocene to Lower Miocene Sespe Formation in Santiago Canyon (Fig. 2), and the Oligocene to Lower Miocene Vaqueros Formation along the south shore of Irvine Lake (Fig. 3). On Sunday, we will travel southwest to the San Joaquin Hills, where we will look at exposures of the Middle Miocene Topanga Formation in the Laguna Coast Wilderness Park, the Upper Miocene Monterey Formation and Middle Pleistocene terrace deposits at Crystal Cove State Park, and the Middle Miocene San Onofre Breccia and the Upper Miocene to Lower Pliocene Capistrano Formation at Dana Point.

Figure 1. Iron pisolites developed in an ancient soil horizon in the Paleocene Silverado Formation in Silverado Canyon (stop 4). Photo courtesy of Gene Fritsche.





Figure 2. Fluvial channel in the Upper Eocene to Lower Miocene Sespe Formation in Santiago Canyon (stop 5). Photo courtesy of Gene Fritsche.



Figure 3. Fossil burrow and taxodont bivalves in the Oligocene to Lower Miocene Vaqueros Formation along the south shore of Irvine Lake (stop 6). Photo courtesy of Gene Fritsche.

CAMPING

For those wishing to camp, a group site has been reserved at O'Neill Regional Park (Fig. 4) for both Friday and Saturday nights. You have the option of camping both Friday and Saturday nights or just Saturday night. To get to O'Neil Regional Park either north or south on the I-5 freeway, take the **El Toro Road** offramp at Leisure World and go northeast toward the Santa Ana Mountains. Continue northeast, under the highway 241 tollway, to **Live Oak Canyon Road** (highway S19). Turn right (east) on Live Oak Canyon Road and follow it to **O'Neill Regional Park**. At the entrance kiosk, tell the ranger you are with the Pacific Section SEPM group and get directions to the **Featherly Group site**. The camping fee **has not been paid** by PS-SEPM. Your cost for camping will be **\$15.00 per vehicle per night**. At the campsite are water, tables, and restrooms; free hot showers are within a short walking distance. There are no sewer connections or electrical outlets.



Figure 4. Important locations for the Saturday portion of the field trip. E = El Toro Road; L = Live Oak Canyon Road route to campground; C = O'Neill Regional Park campground; H = Hampton Inn; M = Marriott Courtyard; D = dinner and lunch site at Irvine Lake on Saturday; numbers 1 through 6 = field trip stops for Saturday. Buses will pick up participants either at the campground at 8:00 a.m. or at the Calvary Chapel of the Canyons across the street from Stop 4 at 8:30 a.m. Map courtesy of Google Earth.

LODGING

For those desiring indoor lodging, we recommend the following:

Courtyard by Marriott
27492 Portola Parkway
Foothill Ranch, CA 92610
Phone: 949-951-5700 or 800-321-2211

Hampton Inn
27102 Towne Centre Drive
Foothill Ranch, CA 92610
Phone: 949-597-8777

They are closest to the campground (Fig. 4). **You must make your own reservations.**

TRANSPORTATION LOGISTICS

Travel during the field trip will be by bus only. Due to limited parking at many of the field stops, we ask that you do not drive your own vehicle. For those camping out on Friday night, buses will pick you up at the PS-SEPM campsite at 8:00 a.m. on Saturday morning. Please be ready on time. For those arriving by car on Saturday morning, arrangements have been made for you to park in the lot at Calvary Chapel of the Canyons on Silverado Canyon Road. Field trip buses will pick you up there at 8:30 a.m. The Chapel is on the south (right) side of the road. Again, please be on time.

After the last stop on Saturday morning, buses will return to the Calvary Chapel parking lot and those with cars can follow the buses to Irvine Lake for lunch. There is ample parking at Irvine Lake. After lunch, **everyone** will board buses at Irvine Lake for travel to afternoon field stops. Toward the end of the afternoon, buses will return to Irvine Lake for the last geology stop of the day followed by dinner. After dinner, buses will transport campers to O'Neill Park. Those with cars at Irvine Lake can disperse either to camp or to motel lodging.

TRANSPORTATION LOGISTICS (cont.)

On Sunday morning, campers must pack up and leave O'Neil Regional Park. All field-trippers will meet and park personal vehicles at 8:30 a.m. at the Quail Hill Shopping Center (6601 Quail Hill Pkwy) in Irvine. Take Sand Canyon Avenue offramp from I-405 west of Laguna Canyon Road (Hwy 133). A detailed map will be provided on Saturday. Buses will transport everyone to Laguna Canyon Wilderness Park, Dana Point, and Crystal Cove State Park. After the final stop of the fall field trip at Crystal Cove State Park, buses will return to Quail Hill Shopping Center, where people can eat lunch at several food vendors, retrieve their personal vehicles, and depart for a destination of their choice.

MEALS

Breakfast is not included in the services provided on the field trip. If you require breakfast, you must allow sufficient time at a restaurant or at camp so that you arrive promptly to board buses at pick-up times: 8:00 a.m. at O'Neil Regional Park campsite or 8:30 a.m. at the Calvary Chapel parking lot on Saturday morning; and 8:30 at the Quail Hill Shopping Center on Sunday morning.

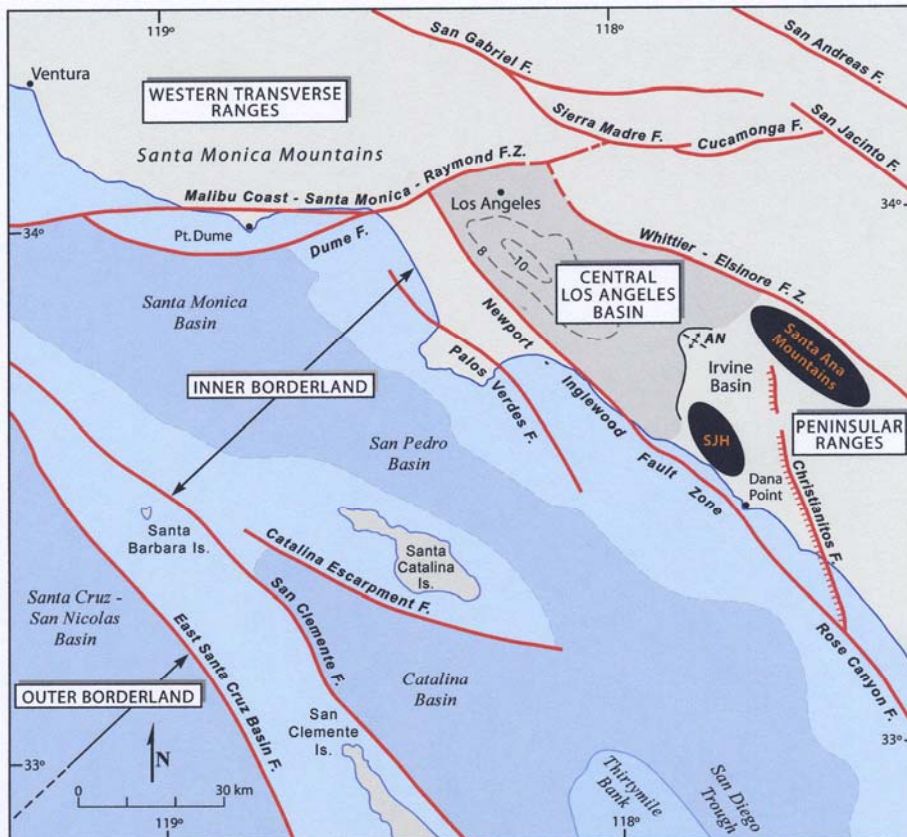
Lunch on Saturday. A catered lunch has been arranged for Saturday at Irvine Lake. The theme is "All American Picnic," and the menu will include: hamburgers and hotdogs, potato salad, baked beans, cole slaw, watermelon wedges, brownies, soft drinks, and bottled water.

Dinner on Saturday. A catered dinner has been arranged for Saturday evening at Irvine Lake. The theme is "Western Barbecue," and the menu will include: tri-tip, chicken breast, baked beans, corn on the cob, fresh fruit medley, brownies, beer, soft drinks, and bottled water.

Lunch on Sunday is not included in the services provided on the field trip. Snacks and beverages will be provided around mid-morning. Food services are available for lunch at the Quail Hill Shopping Center at the official end of the field trip at about midday.

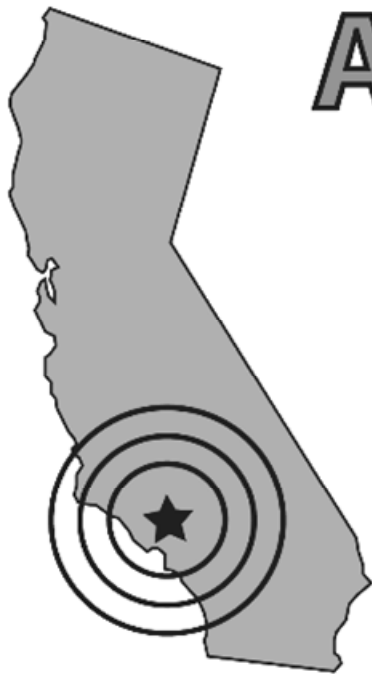
FIELD TRIP RESERVATIONS AND FEES

Reservations must be made for the field trip by **August 28, 2008**. Use the reservation sheet found near the end of this newsletter to secure your place on the field trip. Field trip fee-schedule and instructions for making reservations are on the reservation sheet.



Geomorphic provinces, major faults, and principal late Cenozoic basins in onshore and offshore southern California. SJH – San Joaquin Hills; AN – Anaheim Nose (a subsurface structural high). Contours in central Los Angeles Basin depict inferred late Cenozoic sediment thickness in kilometers. Sense of motion along normal faults is indicated by hachures on down-dropped side (in Cooper, J. D., and Sawlan, M. G., 2000, Evaluation of the Irvine Ranch Land Reserve Potential Natural Landmark, Orange County, California, for its representation of Continental Margin Geologic History of the South Pacific Border Province: National Park Service Final Report, 205p.)

Mark your calendars also for...



AAPG-SEG

West Coast

Student Expo

25-27 September 2008

**California State University,
Northridge**

***Student poster presentations, company
interviews, networking, field trips, and more...***

***Interested Companies and Students see:
www.csun.edu/geology/aapg-seg.htm
for registration information***

REGISTRATION FORM

Pacific Section SEPM Fall Field Trip 2008

September 13-14, 2008

Geology of the Irvine Ranch National Natural Landmark, Orange County, California

Please fill out **one form per person**. Required registration fee includes: fieldtrip guidebook, two lunches, BBQ dinner on Saturday night, bus transportation, and snacks for two days.

Name _____

Mailing Address _____

Phone _____ E-mail _____

Registration fee (Required). REGISTRATION DEADLINE is August 28, 2008.

The non-member/non-student registration fee (below) includes a 3-year membership in PS-SEPM (see **Membership Form** on reverse side).

Member PS-SEPM/non-student: \$150.00 _____

Non-Member PS-SEPM/non-Student: \$170.00 _____

Student (Institution: _____): *\$25.00 _____

*Actual student fee is \$75. Chevron is graciously sponsoring student participation in this field trip and is covering \$50 of the \$75 student fees.

This fall field trip salutes the scientific and educational contributions of John D. Cooper, emeritus professor of geology, CSUF. So to further honor him, we kindly ask all professional geoscientists to consider contributing either **\$40** to donate a copy of the Irvine Ranch field guide to a high school or college in the area *and/or* **\$25** to sponsor an undergraduate or graduate student on the field trip.

Donation amount: \$ _____

Total: _____

Checks *only*; made payable to PS-SEPM

MAIL WITH FORM TO: Wayne Henderson

**Department of Geological Sciences
California State University, Fullerton
800 North State College Blvd.
Fullerton, CA 92834-6850**

Camping. A separate fee of \$15.00/vehicle/night will be collected by rangers at O'Neill Regional Park for staying with the SEPM group at Featherly Group Camp Site. See details, map, and directions in **Field Trip Information** in this newsletter. For reservation purposes, please check (✓) which nights you will be camping at O'Neill Park.

Friday _____

Saturday _____

Pacific Section – SEPM (Society for Sedimentary Geology)
Membership Form, 2008

Renew ☐

New Member ☐

Last Name	First Name	Middle Initial
-----------	------------	----------------

Mailing Address		
Company/Teaching Institution		
Department		
Street/P. O. Box #		
City	State	Postal Code

Preferred Telephone #	
FAX	

Email Address	
---------------	--

Occupation	
------------	--

Regular Memberships <small>(check ✓ one)</small>	1-year professional	\$ 7.50	
	3-year professional	\$20.00	
	1-year student	\$ 5.00	
Lifetime Memberships <small>(check ✓ age group)</small>	20-40 years old	\$150.00	
	40-60 years old	\$100.00	
	60 years old and older	\$ 50.00	

Mailing labels on newsletters will indicate the year when an individual membership expires.

Honorary and Lifetime members are permanent members of the Society and are exempt from further dues payments.

Make check payable to "Pacific Section, SEPM," and send to:

Richard J. Behl
 CSU Long Beach
 Department of Geological Sciences
 1250 Bellflower Blvd.
 Long Beach, CA 90840

The Pacific Section SEPM has grown to become an international society, attracting students and working professionals from the United States, mainly from California and other Pacific states including Hawaii and Alaska, and from Canada, Europe, Asia, and South America. Please support the Pacific Section, SEPM with a new or renewed membership. Recruit new members by distributing copies of this membership form to all who share an interest in sedimentary geology.

Why Join the Pacific Section SEPM?

- The Pacific Section SEPM is one of the premier geological societies of western North America.
- Members benefit from discounts on superbly done field-trip guidebooks and special publications that address sedimentologic and stratigraphic aspects of the Pacific region of the United States.
- Membership dues help defray costs of field trips and publications, and help maintain the California Well Data Repository in Bakersfield, California, which archives logs, cores, cuttings, and microfossils from boreholes in California.
- **Society Newsletter, *Pacific Sedimentologist***, highlights Society field trips, publications, conferences and other news for the calendar year. It is distributed both as e-mail and surface mail versions.

KEEP A COPY OF THIS FORM FOR YOUR RECORDS.

Membership Survey

Your input is sought for the sake of the future of your Society, Pacific Section SEPM (Society for Sedimentary Geology)

Please take 5 minutes to click on the link below (or type it into your browser) and complete the Pacific Section SEPM membership survey. Your responses will help guide the Pacific Section through the Executive Committee in planning events and determining policies over the next few years. In requesting your feedback, the survey seeks suggestions for activities and services other than what is offered already, suggestions for changes in the structure and governance of the Society, nominations for officers and field trip leaders, and for volunteers to serve in various capacities. Results of the survey will be publicized later in newsletters and on the PS-SEPM website:

<http://www.sci.sdsu.edu/pacsepm>. Thank you for your time and valuable input.

http://www.surveymonkey.com/s.aspx?sm=9U_2bkzmiI9_2fns_2baCRfOCuIA_3d_3d

Nominations Sought For Officers on the Executive Committee, Pacific Section SEPM

Up until about seven years ago, the time of the fall field trip each year traditionally marked the end of all terms of office on the PS-SEPM Executive Committee: President, Vice President, Secretary, and Treasurer, and the President Elect becomes President. However, the role of officers and the length of their terms changed during the last seven years for the sake of retaining experience and maintaining continuity in the Society. The late John Cooper, long-time mainstay for the Society, served as Society Treasurer and Managing Editor for nearly ten years. As Managing Editor, he not only served as editor-in-chief in spearheading the publishing of new books but managed the sale of all PS-SEPM books by mail and at geologic conferences. Since John's passing, the Executive Committee decided to distribute the work-load by subdividing the Managing Editor role into Publication Sales Manager to handle the inventory and sales of PS-SEPM publications, and Managing Editor to shepherd new, high-quality volumes to publication. Mario Caputo (Mt. San Antonio College) has volunteered to serve as permanent Secretary, Newsletter Editor, and Publications Sales Manager. Morgan Sullivan (Chevron Energy Technology Company) has volunteered to serve as Managing Editor. Past President, Rick Behl, assumed duties as interim Treasurer since September, 2007.

New people are needed to fill the elected offices of President, President-Elect, Vice President, and Treasurer. According to the constitution and by-laws governing the Society, duties and responsibilities of these offices are as follows:

President

- presides over executive council meetings
- appoints editors, committee chairs, business representatives, etc. as necessary to execute activities of the Society
- serves as official representative at Council meetings of the parent global SEPM, and communicates yearly summaries of activities, accomplishments, etc. to parent society
- writes President's Column for Newsletter

(continued next page)

President-Elect

- assists existing president or assumes duties of president in the event of absence or disability of existing president
- assumes duties of president in the year following election to this office
- oversees selection of nominees for next year's officers

Vice President

- assumes responsibility for organizing annual fall field trips and field trips offered in association with conventions
- assumes president's duties as presiding officer when neither president nor president-elect can be available

Treasurer

- has custody of all funds of the Society; keeps tabs on cash flow and a tight rein on the Managing Editor in terms of overextending on publication commitments
- keeps accounts of receipts and disbursements
- provides periodic financial report to Executive Committee
- keeps track of insurance payments, year-end filing of taxes, and copyrights
- submits account to membership at end of term
- term of office is two years, renewable.

During a normal business year, a President Elect would learn "the ropes" in the Society for the next year (when he or she would assume the office of President) by helping and observing the existing President, who in turn would seek advice from the Past President. This interrelationship between President Elect, President, and Past President was maintained to establish familiarity in the operation of the Society and to preserve the experience of officers in directing the Society. Currently, the term for each of these three offices is one year.

Nominations and elections to fill the offices of President, President Elect, and Vice President revert back-and-forth between general northern and southern areas within the entire Pacific Section, which includes Hawaii, Alaska, Washington, Oregon, California, and Nevada. For at least the last two decades, officers have been from either northern or southern California. The office of Treasurer can be semi-permanent and can be filled with a candidate from either northern or southern areas in the Pacific Section.

As of this year's fall field trip, the offices of President, President Elect, and Vice President should be filled by people in the general northern area of the Pacific Section, given that the 2009 Fall field trip will likely be in Northern California, Oregon, or Washington. Please suggest someone (yourself or others) who could serve as new President, President Elect, Vice President, and Treasurer for the Society.

If you have nominations and/or would like to serve as an officer please attend the Executive Committee meeting scheduled tentatively for the end of the day before dinner on Saturday, September 13, 2008.

Pacific Sedimentologist

Newsletter of the Pacific Section SEPM
(Society for Sedimentary Geology)

<http://www.sci.sdsu.edu/pacsepm>



PACIFIC
SECTION

Mario V. Caputo, Editor
1674 Maywood Avenue, Upland, CA 91784

SEND YOUR NEWSLETTER CONTRIBUTIONS TO:
mvcaputo@earthlink.net

Executive Committee 2008 Pacific Section, SEPM (Society for Sedimentary Geology)

President:

Kathleen M. Marsaglia
Department of Geological Sciences
CSU Northridge
18111 Nordhoff Street
Northridge, CA 91330
voice: (818) 677-3541
FAX: (818) 677-2820
kathie.marsaglia@csun.edu

Vice President:

Wayne Henderson
Department of Geological Sciences
CSU Fullerton
800 N. State College Blvd
Fullerton, CA 92834
cell: (951) 204-5581
whenderson@fullerton.edu

President Elect:

VACANT

Interim Treasurer:

Richard (Rick) J. Behl
Department of Geological Sciences
CSU Long Beach
1250 Bellflower Blvd.
Long Beach, CA 90840
voice: (562) 985-5850
FAX: (562) 985-8638
behl@csulb.edu

Managing Editor:

Morgan D. Sullivan
Chevron Energy
1500 Louisiana
Rm 17052C
Houston, TX 77002
voice: (832) 854-6997
cell: (832) 247-0213
morgansullivan@chevron.com

Secretary/NL Editor/Publications Manager:

Mario V. Caputo
1674 Maywood Avenue
Upland, CA 91784
voice: (909) 594-5611 x4439
FAX: (909) 468-4036
mvcaputo@earthlink.net

Webmaster:

Gary H. Girty
Department of Geological Sciences
San Diego State University
San Diego, CA 92182
voice: (619) 594-2552
FAX: (619) 594-4372
ggirty@geology.sdsu.edu

Webmaster:

Tony Carrasco
Department of Geological Sciences
San Diego State University
San Diego, CA 92182
voice: (619) 594-5589
tcarrasc@geology.sdsu.edu

Past President:

Richard (Rick) J. Behl
Department of Geological Sciences
CSU Long Beach
1250 Bellflower Blvd.
Long Beach, CA 90840
voice: (562) 985-5850
FAX: (562) 985-8638
behl@csulb.edu

Advisor:

A. Eugene Fritsche
Emeritus Professor of Geology
Department of Geological Sciences
CSU Northridge
18111 Nordhoff Street
Northridge, CA 91330
geneandsuef@dslextre.me